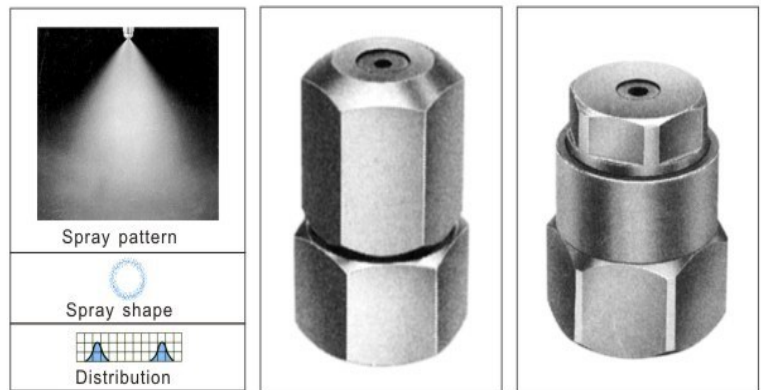


# GY spray drying fog nozzles

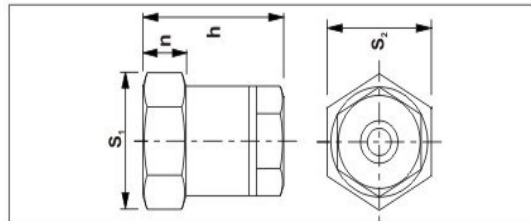
## DESIGN FEATURES

The nozzle body is mainly made of stainless steel, with harden SS, alloy or gem for accessories. With a swirl leading chest inside, the liquid is changed into centrifugal mist with little spraying drop. It can close contact with hot air, and widely applied in food, ceramic, pharmacy, chemical, dyeing and metallurgy, etc.



## SIZE AND DIMENSIONS

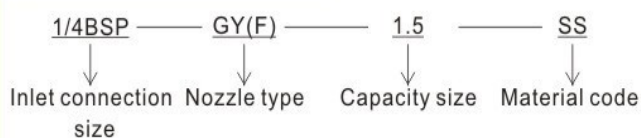
Series	Nozzle Inlet Conn. NPT or BSPT	Dimensions(mm)				Weight(g)	
		h	n	s1	s2	SS	BRASS
GY(F)	1/4	58	10	34.9	19	360	395
	3/8	58	14	34.9	22.5	360	395
GY(M)	1/4	59.5	10	44.5	19	570	630
	3/8	59.5	14	44.5	22.5	570	630



## PERFORMANCE DATA

Inlet com NPT or BSPT(M)	Capacity	Rating spray hole Dia.(mm)	Capacity (Liters/minute)															
			3bar	4bar	5.5bar	7bar	10bar	15bar	20bar	35bar	50bar	70bar	100bar	135Bar	170bar	210bar	275bar	340bar
1/4	1	1.4	0.67	0.77	0.91	1.0	1.2	1.5	1.7	2.3	2.7	3.2	3.9	4.5	5.1	5.6	6.4	7.1
			68°	72°	73°	74°	75°	76°	71°	67°	62°	57°	55°	53°	51°	50°	48°	46°
3/8	1.5	1.8	1.1	1.2	1.4	1.6	1.9	2.4	2.8	3.6	4.4	5.1	6.2	7.2	8	8.9	10.2	11.4
			78°	82°	83°	84°	80°	77°	75°	72°	65°	59°	57°	55°	53°	51°	49°	47°
1/4	2	2	1.3	1.5	1.8	2.1	2.5	3	3.5	4.6	5.5	6.5	7.8	9	10.1	11.2	12.9	14.3
			77°	81°	81°	81°	80°	79°	73°	68°	62°	57°	55°	53°	51°	50°	48°	46°
1/4	3	2.4	2.1	2.4	2.8	3.1	3.7	4.6	5.3	7	8.4	9.9	11.9	13.8	15.5	17.2	20	22
			78°	79°	79°	78°	77°	76°	67°	59°	53°	48°	46°	44°	41°	39°	37°	35°
1/4	4	2.8	2.6	3	3.5	4	4.8	5.8	6.7	8.9	10.6	12.6	15	17.5	19.6	22	25	28
			76°	76°	77°	78°	77°	76°	67°	59°	53°	48°	46°	44°	41°	38°	35°	33°
1/4	5	3.3	3.4	3.9	4.5	5.1	6.1	7.5	8.7	11.5	13.7	16.2	19.4	23	25	28	32	36
			91°	91°	88°	86°	82°	79°	71°	63°	56°	50°	46°	45°	43°	40°	37°	34°
1/4	6	3.5	4	4.6	5.4	6.1	7.3	8.9	10.3	13.6	16.3	19.3	23	27	30	33	38	42
			89°	89°	86°	83°	80°	78°	69°	61°	56°	52°	48°	46°	43°	42°	40°	38°
1/4	7	3.6	4.3	5	5.8	6.6	7.9	9.6	11.1	14.7	17.6	21	25	29	32	36	41	46
			91°	88°	85°	83°	80°	78°	69°	60°	59°	58°	55°	53°	51°	48°	45°	42°
1/4	8	4	5.4	6.2	7.3	8.2	9.8	12	13.9	18.3	22	26	31	36	40	45	51	57
			92°	89°	86°	83°	78°	74°	65°	57°	54°	52°	51°	50°	48°	46°	44°	42°
1/4	10	4.5	7.1	8.3	9.7	10.9	13	16	18.4	24	29	35	41	48	54	60	68	76
			94°	87°	85°	83°	79°	75°	67°	59°	57°	55°	48°	46°	44°	42°	40°	38°
1/4	15	5.4	11.6	13.4	15.7	17.7	21	26	30	40	47	56	67	78	87	97	111	123
			86°	82°	80°	78°	73°	68°	60°	52°	51°	50°	46°	44°	43°	40°	36°	32°
1/4	20	6.4	17.8	21	24	27	32	40	46	61	73	86	103	119	134	149	170	189
			80°	80°	80°	80°	72°	64°	55°	47°	46°	45°	42°	39°	37°	35°	30°	32°

## ORDERING INFORMATION



## COMMON APPLICATION

- High pressure fuel injection
- Lubrication
- Gas cooling
- Dust remove ,dust control